



Heathfield Court, London, W4 4LR

Guide Price £550,000

WHITMAN & CO.

SALES · LETTINGS · COMMERCIAL

- Lovely central Chiswick location
- Fifth floor with commanding views
- Includes heating and hot water
- Great for transport links
- Spacious reception room
- No onward chain

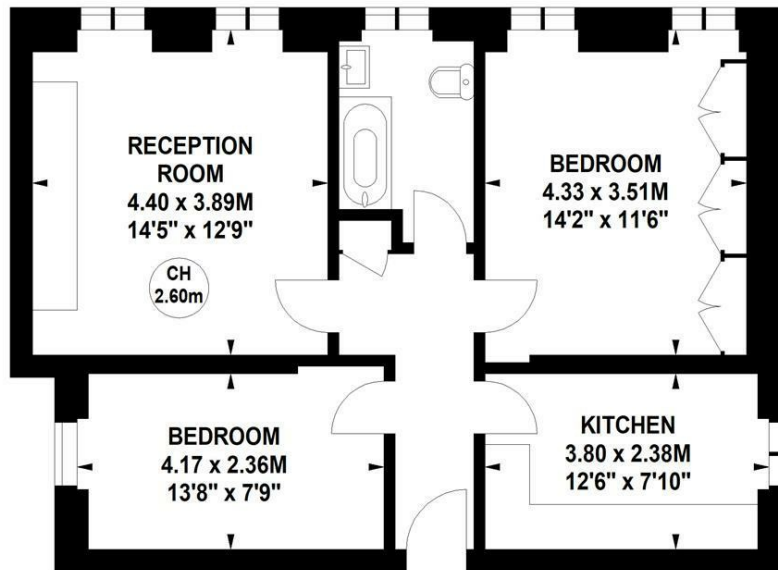
Tenure - Leasehold + share of freehold
 Lease Length - 989 Years remaining
 Ground Rent - Peppercorn
 Service Charge - £7505 pa
 Local Authority - Hounslow
 Council Tax - Band D

Heathfield Court, Heathfield Terrace, W4

Approximate gross internal area

63.73 sq m / 686 sq ft

Key :
 CH - Ceiling Height



Fifth Floor

Not to scale, for guidance only and must not be relied upon as a statement of fact.
 All measurements and areas are approximate only

THE PROPERTY

An exceptionally light triple aspect top-floor apartment with delightful views across Turnham Green and beyond, situated within one of Chiswick's most prestigious and well-maintained private developments, moments from Chiswick High Road and its extensive shopping facilities, numerous restaurants and bars. The accommodation comprises a 14'5" reception room with fitted shelving and lovely views over the green, a main double bedroom with fitted wardrobes and views over the green, a second double bedroom, a fitted kitchen/breakfast room, bathroom, entrance hall with storage, lift access, gated off street parking (unallocated) and porter. Please note, the heating and hot water are included in the service charge. Local transport links include both Chiswick Park and Turnham Green tube stations, as well as various local bus routes and convenient vehicular access via the A4/M4 to central London and Heathrow. No onward chain.

SITUATION



5-7 Turnham Green Terrace, Chiswick, London, W4 1RG

Tel 020 8747 8800

E-mail sales@whitmanandco.com

Website www.whitmanandco.com



MISREPRESENTATION ACT 1967

Whitman & Co. for themselves and for the vendors give notice that these particulars do not constitute any part of, an offer of contract. All statements contained in these particulars are made without responsibility on the part of Whitman & Co. or the vendor. None of the statements contained in these particulars is to be relied upon as statements or representations of facts. Any intending purchaser must satisfy himself by inspection or otherwise as to the correctness of each of the statements contained in these particulars. The vendor does not make or give, and neither Whitman & Co. or any person in their employment has any authority to make or give, any representation or warranty whatever in relation to the property.